



YOU
ARE ♥
CUTE

YOU
ARE ♥
CUTE



ABOUT US



You Are Cute was born out of a love for the nail industry and a desire to make it accessible for every nail artist, regardless of their experience or budget.

We stand beside those who are just beginning their journey in the world of manicure, offering simple, convenient, and high-quality materials that help them grow with joy and ease. We understand the needs of nail artists and aim to create a sense of belonging to a community where every master feels like part of a big nail family.



WHY YOU ARE CUTE IS SPECIAL:

Friendly materials. Convenient, safe, and easy to use, they allow nail artists to work with pleasure and confidence, without complicated techniques.

A real cute vibe. Each product is created with love and care to inspire nail artists and bring a positive mood.

Care for you and your clients. We know how important quality and comfort are, which is why our products meet the highest standards while remaining affordable for everyone.

Convenient jar sizes. A small volume is not only cost-effective, but also allows you to experiment with more colors and textures without worrying that materials will go bad.

You Are Cute — your guide to the world of nail artistry!

RUBBER BASE

Volume: 5 ml

Volume: 15 ml



Transparent, universal base.

TPO FREE

FEATURES:

- Has an acidity level of 3–4 pH.
- A minimal shrinkage during wear is possible due to the base's elasticity.
- May cause a warm or burning sensation on damaged or very thin nails (not on healthy nails).
- Can be used as an underlayer for all types of coatings and for extensions on gel tips.
- Medium consistency, self-leveling.
- The recommended lamp power for curing the base is 36–48 W. The lamp must be original/authentic.
- Ensures 3–4 weeks of wear without lifting. Removes easily both by filing and with remover liquid.
- It is hypoallergenic and has a neutral scent.



Rubber Base



CLASSIC COVER BASES



Volume — 5 ml.

The perfect product for creating an even and strong nail coating. Thanks to its dense yet lightweight texture, it flawlessly levels the nail surface while masking imperfections.

TPO FREE

FEATURES:

- ♥ Not suitable for leveling long nails without prior reinforcement.
- ♥ Provides high coverage of the natural nail due to strong pigmentation.
- ♥ Hypoallergenic with a neutral scent.
- ♥ Curing time in the lamp — 120 seconds.
- ♥ Can be gently warmed to make the consistency thinner.
- ♥ A minimal shrinkage during wear is possible due to the base's elasticity.
- ♥ Requires a Rubber Base underlayer.
- ♥ Has an acidity level of 5–6 pH.
- ♥ Recommended lamp power for curing — 36–48 W. The lamp must be original.
- ♥ Removes easily both by filing and with removal liquid.
- ♥ Provides 3–4 weeks of wear without lifting.
- ♥ Elastic and flexible.
- ♥ The main rule during leveling: the thickness at the free edge should be 0.5 mm.
- ♥ Thixotropic — becomes thinner when moving the brush during application. run and self-levels very quickly.
- ♥ Has a medium consistency.





Cover Base №1



Cover Base №2



Cover Base №3



Cover Base №4



Cover Base №5



Cover Base №6



Cover Base №7



Cover Base №8



Cover Base №9



Cover Base №10



Cover Base №11



Cover Base №12



Cover Base № 13



Cover Base №14



Cover Base №15



Cover Base №16



Cover Base №17



Cover Base №18



Cover Base №19



Cover Base №20



Cover Base №21



Cover Base №22



Cover Base №23



Cover Base №24



Cover Base №25



Cover Base №26



Cover Base №27





GEL POLISHES

Volume – 5 ml.



Perfectly pigmented gel polishes apply evenly in one or two thin coats. They do not streak during application and self-level easily, featuring a medium-thick consistency.

TPO FREE

APPLICATION METHOD:

- Remove the sticky layer after leveling with base/gel.
- Apply the gel polish (1–2 thin coats). Load the brush with product, paint the center of the nail first, then the side walls. Use a fine-liner brush to work close to the cuticle. The first layer should always be semi-transparent.
- Cure for 60 seconds.
- Check with an orange stick to make sure everything has cured.
- Apply the top coat. Cure for 120 seconds.
- Do not wipe after curing, as this may reduce the shine.



Color N°1



Color N°2



Color N°3



Color N°4



Color N°5



Color N°6



Color N°7



Color N°8



Color N°9



Color N°10



Color N°11



Color N°12



Color N° 13



Color N°14



Color N°15

GEL POLISHES



Color N°16



Color N°17



Color N°18



Color N°19



Color N°20



Color N°21



Color N°22



Color N°23



Color N°24



Color N°25



Color N°26



Color N°27



Color N°28



Color N°29



Color N°30



Color N°31



Color N°32



Color N°33



Color N°34



Color N°35



Color N°36



Color N°37



Color N°38



Color N°39



Color N°40



Color N°41



Color N°42



Color N°43



Color N°44



Color N°45



GEL POLISHES



Color N°46



Color N°47



Color N°48



Color N°49



Color N°50



Color N°51



Color N°52



Color N°53



Color N°54



Color N°55



Color N°56



Color N°57



Color N°58



Color N°59



Color N°60



Color N°61



Color N°62



Color N°63



Color N°64



Color N°65



Color N°66



Color N°67



Color N°68



Color N°69



Color N°70



Color N°71



Color N°72



Color N°73



Color N°74



Color N°75



GEL POLISHES



Color N°76



Color N°77



Color N°78



Color N°79



Color N°80



Color N°81



Color N°82



Color N°83



Color N°84



Color N°85



Color N°86



Color N°87



Color N°88



Color N°89



Color N°90



Color N°91



Color N°92



Color N°93



Color N°94



Color N°95



Color N°96



Color N°97



Color N°98



Color N°99



Color N°100



Color N°101



Color N°102



Color N°103



Color N°104



Color N°105



GEL POLISHES



Color №106



Color №107



Color №108



Color №109



Color №110



Color №111



Color №112



Color №113



Color №114



Color №115



Color №116



Color №117



Color №118



Color №119



Color №120



Color №121



Color №122



Color №123



Color №124



Color №125



Color №126



Color №127



Color №128



Color №130



Color №131



Color №132



Color №133



Color №134



Color №135



Color №136



Color №137



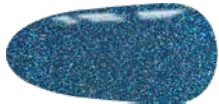
Color №138



Color №139



Color №140



Color №141

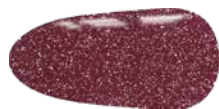
GEL POLISHES



Color N°142



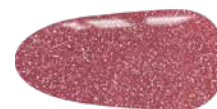
Color N°143



Color N°144



Color N°145



Color N°146



Color N°147



Color N°148



Color N°150



Color N°151



Color N°152



Color N°153



Color N°154



Color N°155



Color N°156



Color N°157



Color N°158



Color N°159



Color N°160



Color N°161



Color N°162



Color N°163



Color N°164



Color N°165



Color N°166



LIQUID GELS — BOTTLE GEL

Volume: 5 ml

Volume: 15 ml

An innovative material designed for strengthening, leveling, and extending nails. It is a hybrid of polygel and base gel. It consists of 60–80% acrylic copolymer (the main component of polygel) and a small amount of hydroxyethyl methacrylate HEMA (approximately 20–30%), the core component of base coatings.

This gel can fully replace a base gel.

TPO FREE

FEATURES:

- ♥ Polymerization wavelength — 365–405 nm.
- ♥ UV/LED lamp power — 36–48 W.
- ♥ Recommended coating thickness — 0.5 mm at the nail edge and 1 mm at the apex.
- ♥ Acid-free with a medium consistency.
- ♥ Medium pigmentation, covers the free edge.
- ♥ Full polymerization time — 120 seconds.
- ♥ Suitable only for nail strengthening and extension.
- ♥ Provides excellent shock absorption.
- ♥ When using this gel for strengthening, the natural nail must be filed. Requires a Rubber Base foundation.
- ♥ Can be additionally warmed to make the gel thinner.





LIQUID GELS — BOTTLE GEL



Bottle Gel N°1



Bottle Gel N°2



Bottle Gel N°3



Bottle Gel N°4



Bottle Gel N°5



Bottle Gel N°6



Bottle Gel N°7



Bottle Gel N°8



Bottle Gel N°9



Bottle Gel N°10



Bottle Gel N°11



Bottle Gel N°12



Bottle Gel N°13



Bottle Gel N°14



Bottle Gel N°15



Bottle Gel N°16



Bottle Gel N°17



Bottle Gel N°18



Bottle Gel N°19



Bottle Gel N°24



Bottle Gel N°25



Bottle Gel N°26



Bottle Gel N°27



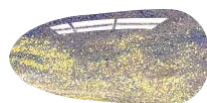
Bottle Gel N°28



Bottle Gel N°29



Bottle Gel
Pure Vibe



Bottle Gel
Calm Vibe



Bottle Gel
Dream Vibe



Bottle Gel
Bloom Vibe



Bottle Gel
Glow Vibe



Bottle Gel
Balance Vibe

BUILDER GEL

Volume: 15 ml



A polymer light-curing material which, thanks to its strength, allows significant extension of the natural nail plate.

It contains photoinitiators that trigger the polymerization process when exposed to ultraviolet light of a specific wavelength.

TPO FREE

FEATURES:

- ♥ Acid-free.
- ♥ Shock-absorbing — does not crack upon impact.
- ♥ Medium consistency.
- ♥ Medium pigmentation, covers the free edge.
- ♥ Suitable for “no-filing” extension techniques.
- ♥ Suitable for sculpting using dual forms.
- ♥ Does not cause burning in the lamp.
- ♥ Thickens in cold conditions and becomes thinner in warmth.
- ♥ Thixotropic — becomes more fluid when the brush is moved during application.
- ♥ Can be additionally warmed to make the gel thinner.
- ♥ Firm at a thickness of 1 mm. If the thickness is less than 1 mm, it may slightly flex, but this does not affect wearability.
- ♥ Does not shrink and maintains the arch well.
- ♥ Requires a Rubber Base substrate.
- ♥ Polymerization wavelength: 365–405 nm.
- ♥ UV/LED lamp power: 36–48 W.
- ♥ Recommended coating thickness: 0.5 mm at the free edge / 1 mm at the apex.
- ♥ Full polymerization time: 120 seconds.





BUILDER GEL



Builder Gel N°1



Builder Gel N°2



Builder Gel N°3



Builder Gel N°6



Builder Gel N°7



Builder Gel N°8



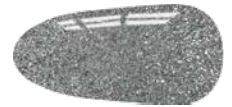
Builder Gel N°9



Builder Gel N°11



Builder Gel N°12



Builder Gel N°45



Builder Gel N°46



Builder Gel N°47



Builder Gel
Juicy Gel N°1



Builder Gel
Juicy Gel N°2



Builder Gel
Juicy Gel N°3



Builder Gel
Juicy Gel N°4



Builder Gel
Juicy Gel N°5



Builder Gel
Juicy Gel N°6



Builder Gel
Juicy Gel N°7



Builder Gel
Juicy Gel N°8



Builder Gel
Juicy Gel N°9



Builder Gel
Juicy Gel N°10



Builder Gel
Juicy Gel N°11



Builder Gel
Juicy Gel N°12



Builder Gel
Juicy Gel N°13



Builder Gel
Juicy Gel N°14



Builder Gel
Juicy Gel N°15



GLITTER GEL

Volume — 5 ml



Glitter Gel is a transparent, medium-viscosity gel enriched with decorative elements.

It applies easily, does not run, and allows you to create expressive accents in nail designs.

Important: Glitter Gel is not intended for extensions or strengthening, as it does not have sufficient durability. Its purpose is to add highlights in designs and create unique nail art. Cure in a lamp for 60–120 seconds.

Cure in a lamp for 60–120 seconds.

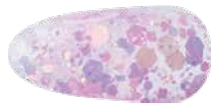
TPO FREE



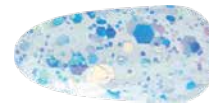
Glitter Gel N°1



Glitter Gel N°2



Glitter Gel N°3



Glitter Gel N°4



Glitter Gel N°5



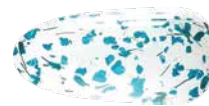
Glitter Gel N°6



Glitter Gel N°7



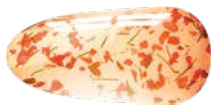
Glitter Gel N°8



Glitter Gel N°9



Glitter Gel N°10



Glitter Gel N°11



Glitter Gel N°12



Glitter Gel N°13





TOP COATS

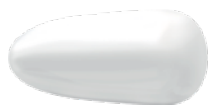
Volume — 5 ml

Top Non Wipe — 5, 15 ml

Reliable protection and a flawless finish.
TPO FREE

FEATURES:

- ♥ Has a medium consistency, allowing comfortable application.
- ♥ It does not run into the cuticles while perfectly covering the nail plate.
- ♥ Prevents strong heating of the nail plate during curing, therefore does not cause burning in the lamp.
- ♥ Ensures wear without lifting for 3–4 weeks.
- ♥ Has a neutral scent.



Top Non Wipe



Top Winter wish №1



Top Winter wish №2



Top Winter wish №3



Top Star Glow



Top Silvery



Top Be my star



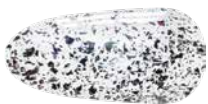
Top Hollywood №1



Top Hollywood №2



Top Hollywood №3



Easy Peasy Top 1



Easy Peasy Top 2



Easy Peasy Top 3



Easy Peasy Top 4



Easy Peasy Top 5



Easy Peasy Top 6



Matte Top



EASY

SET OF DUAL FORMS FOR NAIL EXTENSIONS 12-IN-1

A universal set of dual forms for reusable use.

The kit includes 12 types of forms, 24 pcs of each size, allowing you to choose the perfect option for any nail plate.

FEATURES:

- ♥ **Material:** High-quality ABS plastic — strong and flexible, ensures easy application and removal.
- ♥ **Convenient storage:** All forms are placed in a transparent plastic box with separate sections, helping to keep everything organized and quickly find the needed size.
- ♥ **Versatility:** Suitable for working with gel or acrylic, allowing you to create nails of different lengths and shapes, such as:
 - Classic square with transverse arch 30–35%
 - Modern almond with transverse arch 45–50%
 - Arched square with a cut line smile arch 50–55%
 - Modern almond without apex with transverse arch 45–50%
 - Short almond with transverse arch 35–40%
 - Onychogryphosis form with transverse arch 40–45%
 - Short almond with transverse arch 30–35%





Contacts:

+380 93 63 98 980

+380 93 63 99 051



export@youarecute-global.com

Official Instagram page:

[@youarecute_global](https://www.instagram.com/youarecute_global)

